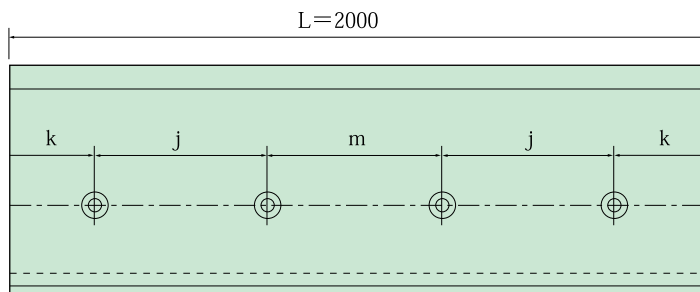
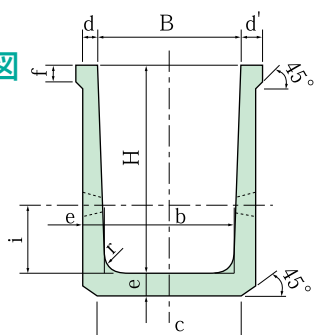
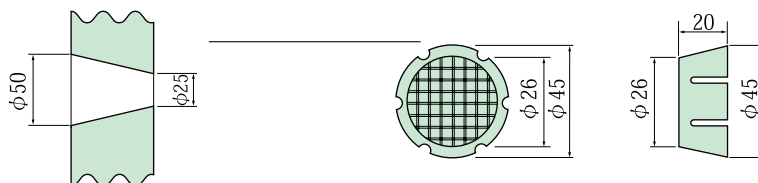


# 鉄筋コンクリート 排水フリューム

形状図



排水孔詳細図



規格表

※は当社独自の製品です。

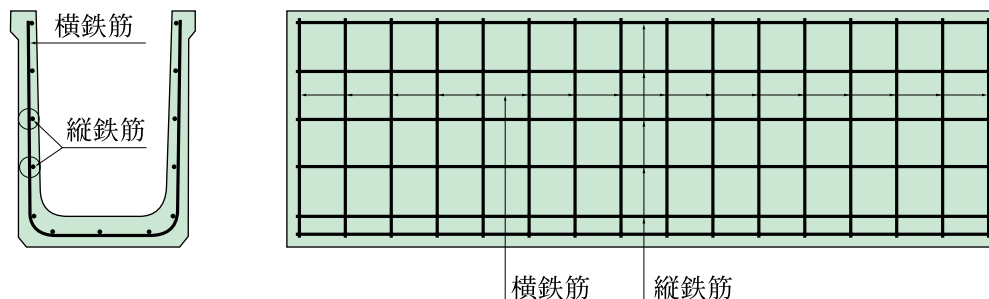
単位 mm

呼び名 (深)×(幅)	寸法													排水孔数	参考質量 (kg)
	H	B	b	c	d	d'	e	f	r	i	k	j	m		
300×300	300	300	260	305	35	45	45	50	40	100	250	500	500	8	197
400×300	400	300	260	310	35	50	50	50	50	150	250	500	500	8	260
400×400	400	400	360	410	35	50	50	50	50	150	250	500	500	8	284
500×400	500	400	360	415	40	55	55	50	50	200	235	500	530	8	361
※500×500	500	500	430	500	45	60	60	60	60	200	250	500	500	8	416
600×400	600	400	350	410	45	60	60	55	60	200	250	500	500	8	449
600×500	600	500	450	510	45	60	60	55	60	200	250	500	500	8	478
600×600	600	600	550	610	45	60	60	55	60	200	250	500	500	8	507
※600×800	600	800	750	810	45	60	60	55	60	200	250	500	500	8	565
※700×700	700	700	640	705	50	65	65	55	70	250	250	500	500	8	640
※800×400	800	400	337	435	50	70	70	70	60	190	250	500	500	8	634
800×600	800	600	530	600	55	70	70	55	70	250	225	310	310	12	718
800×800	800	800	730	800	55	70	70	55	70	250	225	310	310	12	785
※900×900	900	900	820	900	60	80	80	60	70	250	250	500	500	8	995
1000×800	1000	800	720	810	65	80	90	60	80	250	125	360	310	12	1145
1000×1000	1000	1000	920	1010	65	80	90	60	80	250	125	360	310	12	1232
1000×1200	1000	1200	1120	1210	65	80	90	60	90	250	125	360	310	12	1321
1000×1300	1000	1300	1220	1310	65	80	90	60	90	250	125	360	310	12	1364
1000×1500	1000	1500	1420	1510	65	80	90	60	90	250	125	360	310	12	1451
1000×1700	1000	1700	1620	1710	65	80	90	60	90	250	125	360	310	12	1537
1000×1900	1000	1900	1820	1910	65	80	90	60	90	250	125	360	310	12	1623
1000×2000	1000	2000	1920	2010	65	80	90	60	90	250	125	360	310	12	1667
※1100×1100	1100	1100	1010	1110	70	85	100	70	90	275	200	320	320	12	1461
1200×1200	1200	1200	1100	1210	75	90	110	70	90	300	185	310	390	12	1775
1200×1300	1200	1300	1200	1310	75	90	110	70	90	300	185	310	390	12	1827
1200×1500	1200	1500	1400	1510	75	90	110	70	90	300	185	310	390	12	1933
1200×1700	1200	1700	1600	1710	75	90	110	70	90	300	185	310	390	12	2039
1200×1900	1200	1900	1800	1910	75	90	110	70	90	300	185	310	390	12	2144
1200×2000	1200	2000	1900	2010	75	90	110	70	90	300	185	310	390	12	2197
1200×2200	1200	2200	2100	2210	75	90	110	70	90	300	185	310	390	12	2303
1300×1300	1300	1300	1190	1310	80	95	120	80	100	350	225	310	310	12	2091
1300×2300	1300	2300	2190	2310	80	95	120	80	100	350	225	310	310	12	2667
1400×1500	1400	1500	1390	1520	85	100	130	80	100	350	225	310	310	12	2485
1400×1800	1400	1800	1690	1820	85	100	130	80	100	350	225	310	310	12	2673
1400×2000	1400	2000	1890	2020	85	100	130	80	100	350	225	310	310	12	2797
1400×2200	1400	2200	2090	2220	85	100	130	80	100	350	225	310	310	12	2922
1400×2400	1400	2400	2290	2420	85	100	130	80	100	350	225	310	310	12	3047
1500×1500	1500	1500	1380	1520	95	110	140	90	100	400	125	360	310	12	2817
1500×1800	1500	1800	1680	1820	95	110	140	90	100	400	125	360	310	12	3019

# 鉄筋コンクリート 排水フリューム

新潟県規格

## 形状図



## 配筋表

※は当社独自の製品です。

呼び名 (深) × (幅)	配筋							
	横筋 (外)		横筋 (内)		縦筋		斜筋	
	径	本数	径	本数	径	本数	径	本数
300 × 300	4.0	16	—	—	4.0	8	—	—
400 × 300	5.0	16	—	—	4.0	9	—	—
400 × 400	5.0	16	—	—	4.0	10	—	—
500 × 400	D 6	14	—	—	4.0	12	—	—
※ 500 × 500	D 6	14	—	—	4.0	14	—	—
600 × 400	D 6	16	—	—	4.0	13	—	—
600 × 500	D 6	16	—	—	4.0	14	—	—
600 × 600	D 6	16	—	—	4.0	15	—	—
※ 600 × 800	D 6	16	—	—	4.0	18	—	—
※ 700 × 700	D 6	16	—	—	5.0	15	—	—
※ 800 × 400	D10	14	—	—	5.0	13	—	—
800 × 600	D10	14	—	—	5.0	17	—	—
800 × 800	D10	14	—	—	5.0	18	—	—
※ 900 × 900	D10	16	—	—	5.0	18	—	—
1000 × 800	D10	16	—	—	5.0	19	—	—
1000 × 1000	D10	16	—	—	5.0	20	—	—
1000 × 1200	D10	16	D 6	16	5.0	27	D 6	8 × 2 = 16
1000 × 1300	D10	16	D 6	16	5.0	27	D 6	16
1000 × 1500	D10	16	D 6	16	5.0	29	D 6	16
1000 × 1700	D10	16	D 6	16	5.0	31	D 6	16
1000 × 1900	D10	16	D 6	16	5.0	33	D 6	16
1000 × 2000	D10	16	D 6	16	5.0	35	D 6	16
※ 1100 × 1100	D10	19	D 6	19	5.0	27	D 6	10 × 2 = 20
1200 × 1200	D10	20	D 6	20	5.0	29	D 6	20
1200 × 1300	D10	20	D 6	20	5.0	29	D 6	20
1200 × 1500	D10	20	D 6	20	5.0	31	D 6	20
1200 × 1700	D10	20	D 6	20	5.0	33	D 6	20
1200 × 1900	D10	20	D 6	20	5.0	35	D 6	20
1200 × 2000	D10	20	D 6	20	5.0	37	D 6	20
1200 × 2200	D10	20	D 6	20	5.0	39	D 6	20
1300 × 1300	D13	14	D10	14	5.0	31	D10	7 × 2 = 14
1300 × 2300	D13	14	D10	14	5.0	41	D10	14
1400 × 1500	D13	14	D10	14	D 6	33	D10	14
1400 × 1800	D13	14	D10	14	D 6	37	D10	14
1400 × 2000	D13	14	D10	14	D 6	39	D10	14
1400 × 2200	D13	14	D10	14	D 6	41	D10	14
1400 × 2400	D13	14	D10	14	D 6	43	D10	14
1500 × 1500	D13	16	D10	16	D 6	33	D10	8 × 2 = 16
1500 × 1800	D13	16	D10	16	D 6	37	D10	16

# 流速および流量

## Manning公式による

Q = 流量 (m<sup>3</sup>/s e c)

I = 勾配

V = 流速 (m/s e c)

n = 粗度係数0.014

$$V = \frac{1}{n} \cdot R^{2/3} \cdot I^{1/2}$$

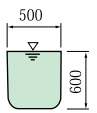
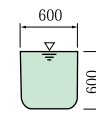
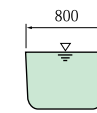
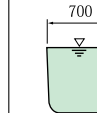

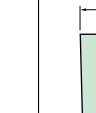
※は当社独自の製品です。

呼 び 名		300×300		400×300		400×400		500×400		※ 500×500		600×400	
通水断面図 (単位mm)													
全断面 A <sub>0</sub> (m <sup>2</sup> )		0.0834		0.1110		0.1510		0.1890		0.2312		0.2236	
通水断面積 A(m <sup>2</sup> )		0.0834		0.1110		0.1510		0.1890		0.2312		0.2236	
潤 辺 P(m)		0.8320		1.0228		1.1228		1.3217		1.3888		1.5043	
径 深 R(m)		0.1002		0.1085		0.1345		0.1430		0.1665		0.1486	
R <sup>2/3</sup>		0.2157		0.2275		0.2625		0.2735		0.3026		0.2806	
I	I <sup>1/2</sup>	V		Q		V		Q		V		Q	
1/50	0.14142	2.179	0.1817	2.298	0.2551	2.652	0.4005	2.762	0.5220	3.057	0.7067	2.834	0.6337
75	0.11547	1.779	0.1484	1.876	0.2082	2.165	0.3269	2.255	0.4262	2.496	0.5770	2.314	0.5174
100	0.10000	1.541	0.1285	1.625	0.1804	1.875	0.2831	1.953	0.3691	2.162	0.4997	2.004	0.4481
125	0.08944	1.378	0.1149	1.453	0.1613	1.677	0.2532	1.747	0.3302	1.933	0.4470	1.792	0.4007
150	0.08165	1.258	0.1049	1.327	0.1473	1.531	0.2312	1.595	0.3015	1.765	0.4080	1.636	0.3658
200	0.07071	1.090	0.0909	1.149	0.1275	1.326	0.2002	1.381	0.2610	1.528	0.3534	1.417	0.3168
250	0.06325	0.975	0.0813	1.028	0.1141	1.186	0.1791	1.235	0.2334	1.367	0.3161	1.267	0.2833
300	0.05774	0.890	0.0742	0.938	0.1041	1.083	0.1635	1.128	0.2132	1.248	0.2885	1.157	0.2587
350	0.05345	0.824	0.0687	0.869	0.0965	1.002	0.1513	1.044	0.1973	1.155	0.2671	1.071	0.2395
400	0.05000	0.770	0.0642	0.812	0.0901	0.938	0.1416	0.977	0.1847	1.081	0.2499	1.002	0.2240
450	0.04714	0.726	0.0605	0.766	0.0850	0.884	0.1335	0.921	0.1741	1.019	0.2356	0.945	0.2113
500	0.04472	0.689	0.0575	0.727	0.0807	0.839	0.1267	0.874	0.1652	0.967	0.2235	0.896	0.2003
550	0.04264	0.657	0.0548	0.693	0.0769	0.800	0.1208	0.833	0.1574	0.922	0.2131	0.854	0.1910
600	0.04082	0.629	0.0525	0.663	0.0736	0.765	0.1155	0.797	0.1506	0.882	0.2040	0.818	0.1829
650	0.03922	0.604	0.0504	0.637	0.0707	0.735	0.1110	0.766	0.1448	0.848	0.1960	0.786	0.1757
700	0.03780	0.582	0.0485	0.614	0.0682	0.709	0.1071	0.738	0.1395	0.817	0.1889	0.757	0.1693
750	0.03651	0.563	0.0470	0.593	0.0658	0.685	0.1034	0.713	0.1348	0.789	0.1825	0.735	0.1637
800	0.03536	0.545	0.0455	0.574	0.0637	0.663	0.1001	0.691	0.1306	0.764	0.1767	0.708	0.1583
850	0.03430	0.529	0.0441	0.557	0.0618	0.643	0.0971	0.670	0.1266	0.741	0.1714	0.687	0.1536
900	0.03333	0.514	0.0429	0.542	0.0602	0.625	0.0944	0.651	0.1230	0.721	0.1666	0.668	0.1494
950	0.03244	0.500	0.0417	0.527	0.0585	0.608	0.0918	0.634	0.1198	0.701	0.1621	0.650	0.1453
1000	0.03162	0.487	0.0406	0.514	0.0571	0.593	0.0895	0.618	0.1168	0.684	0.1580	0.634	0.1418
1100	0.03015	0.465	0.0388	0.490	0.0544	0.565	0.0853	0.589	0.1113	0.652	0.1507	0.604	0.1351
1200	0.02887	0.445	0.0371	0.469	0.0521	0.541	0.0817	0.564	0.1066	0.624	0.1443	0.578	0.1292
1250	0.02828	0.436	0.0364	0.460	0.0511	0.530	0.0800	0.552	0.1043	0.611	0.1413	0.567	0.1268
1300	0.02774	0.427	0.0356	0.451	0.0501	0.520	0.0785	0.542	0.1024	0.600	0.1386	0.556	0.1243
1400	0.02673	0.412	0.0344	0.434	0.0482	0.501	0.0757	0.522	0.0987	0.578	0.1336	0.536	0.1198
1500	0.02582	0.398	0.0332	0.420	0.0466	0.484	0.0731	0.504	0.0953	0.558	0.1290	0.517	0.1156
1600	0.02500	0.385	0.0321	0.406	0.0451	0.469	0.0708	0.488	0.0922	0.540	0.1249	0.501	0.1120
1700	0.02425	0.374	0.0312	0.394	0.0437	0.455	0.0687	0.474	0.0896	0.524	0.1212	0.486	0.1087
1750	0.02390	0.368	0.0307	0.388	0.0431	0.448	0.0676	0.467	0.0883	0.517	0.1195	0.479	0.1071
1800	0.02357	0.363	0.0303	0.383	0.0425	0.442	0.0667	0.460	0.0869	0.509	0.1178	0.472	0.1055
1900	0.02294	0.354	0.0295	0.373	0.0414	0.430	0.0649	0.448	0.0847	0.496	0.1146	0.460	0.1029
2000	0.02236	0.345	0.0288	0.363	0.0403	0.419	0.0633	0.437	0.0826	0.483	0.1117	0.448	0.1002
2500	0.02000	0.308	0.0257	0.325	0.0361	0.375	0.0566	0.391	0.0739	0.432	0.0999	0.401	0.0897
3000	0.01826	0.281	0.0234	0.297	0.0330	0.342	0.0516	0.357	0.0675	0.395	0.0912	0.366	0.0818

(注) 上記通水断面、勾配以外の場合は別途計算します。

Q : 流量 (m<sup>3</sup>/sec), V : 流速 (m/sec), n = 0.014

※は当社独自の製品です。

600×500		600×600		※ 600×800		※ 700×700		※ 800×400		800×600	
											
0.2836		0.3436		0.4635		0.4669		0.2934		0.4501	
0.2836		0.3436		0.4635		0.4669		0.2934		0.4501	
1.6043		1.7043		1.8993		1.9809		1.8913		2.0773	
0.1768		0.2016		0.2440		0.2356		0.1551		0.2167	
0.3150		0.3438		0.3905		0.3815		0.2887		0.3608	
V	Q	V	Q	V	Q	V	Q	V	Q	V	Q
3.182	0.9024	3.473	1.1933	3.945	1.8285	3.854	1.7994	2.916	0.8556	3.664	1.6402
2.598	0.7368	2.836	0.9744	3.221	1.4929	3.147	1.4693	2.381	0.6986	2.976	1.3395
2.250	0.6381	2.456	0.8439	2.789	1.2927	2.725	1.2723	2.062	0.6050	2.577	1.1599
2.013	0.5709	2.197	0.7549	2.495	1.1564	2.437	1.1378	1.844	0.5410	2.305	1.0375
1.837	0.5210	2.005	0.6889	2.277	1.0322	2.225	1.0389	1.684	0.4941	2.104	0.9470
1.591	0.4512	1.737	0.5968	1.972	0.9140	1.927	0.8997	1.458	0.4278	1.822	0.8201
1.423	0.4036	1.553	0.5336	1.764	0.8176	1.724	0.8049	1.304	0.3826	1.630	0.7337
1.299	0.3684	1.418	0.4872	1.611	0.7467	1.573	0.7344	1.191	0.3494	1.488	0.6697
1.203	0.3412	1.313	0.4511	1.491	0.6911	1.457	0.6803	1.102	0.3233	1.377	0.6198
1.125	0.3191	1.228	0.4219	1.395	0.6466	1.363	0.6364	1.031	0.3025	1.288	0.5797
1.061	0.3009	1.158	0.3979	1.315	0.6095	1.285	0.6000	0.972	0.2852	1.215	0.5469
1.006	0.2853	1.098	0.3773	1.247	0.5780	1.219	0.5692	0.922	0.2705	1.152	0.5185
0.959	0.2720	1.047	0.3597	1.189	0.5511	1.162	0.5425	0.879	0.2579	1.099	0.4947
0.919	0.2606	1.003	0.3446	1.139	0.5279	1.112	0.5192	0.842	0.2470	1.052	0.4735
0.883	0.2504	0.963	0.3309	1.094	0.5071	1.069	0.4991	0.809	0.2374	1.011	0.4551
0.850	0.2411	0.928	0.3189	1.054	0.4885	1.030	0.4809	0.779	0.2286	0.974	0.4384
0.822	0.2331	0.897	0.3082	1.018	0.4718	0.995	0.4646	0.753	0.2209	0.941	0.4235
0.796	0.2257	0.868	0.2982	0.986	0.4570	0.964	0.4501	0.729	0.2139	0.911	0.4100
0.772	0.2489	0.842	0.2893	0.957	0.4436	0.935	0.4366	0.707	0.2074	0.884	0.3979
0.750	0.2127	0.819	0.2814	0.930	0.4311	0.908	0.4239	0.687	0.2016	0.859	0.3866
0.730	0.2070	0.797	0.2738	0.905	0.4195	0.884	0.4127	0.699	0.1963	0.836	0.3763
0.712	0.2019	0.777	0.2670	0.882	0.4088	0.862	0.4025	0.652	0.1913	0.815	0.3668
0.678	0.1923	0.740	0.2543	0.841	0.3898	0.822	0.3838	0.622	0.1825	0.777	0.3497
0.650	0.1843	0.709	0.2436	0.805	0.3731	0.787	0.3675	0.595	0.1746	0.744	0.3349
0.636	0.1804	0.695	0.2388	0.789	0.3657	0.771	0.3600	0.583	0.1711	0.729	0.3281
0.624	0.1770	0.681	0.2340	0.744	0.3587	0.756	0.3530	0.572	0.1678	0.715	0.3218
0.601	0.1704	0.656	0.2254	0.746	0.3458	0.728	0.3399	0.551	0.1617	0.689	0.3101
0.581	0.1648	0.634	0.2178	0.720	0.3337	0.704	0.3287	0.521	0.1529	0.665	0.2993
0.563	0.1597	0.614	0.2110	0.697	0.3231	0.681	0.3180	0.516	0.1514	0.644	0.2899
0.546	0.1548	0.596	0.2048	0.676	0.3133	0.661	0.3086	0.500	0.1467	0.625	0.2813
0.538	0.1526	0.587	0.2017	0.667	0.3092	0.651	0.3040	0.493	0.1446	0.616	0.2773
0.530	0.1503	0.579	0.1989	0.657	0.3045	0.642	0.2997	0.486	0.1426	0.607	0.2732
0.516	0.1463	0.563	0.1934	0.640	0.2966	0.625	0.2918	0.473	0.1388	0.591	0.2660
0.503	0.1427	0.549	0.1886	0.624	0.2892	0.609	0.2843	0.461	0.1358	0.576	0.2593
0.450	0.1276	0.491	0.1687	0.558	0.2586	0.545	0.2545	0.412	0.1209	0.515	0.2318
0.411	0.1166	0.448	0.1539	0.509	0.2359	0.498	0.2325	0.377	0.1106	0.470	0.2115

Q : 流量 (m<sup>3</sup>/sec), V : 流速 (m/sec), n = 0.014

※は当社独自の製品です。

呼 び 名		800×800		※ 900×900		1000×800		1000×1000		1000×1200		1000×1300	
通水断面図 (単位:mm)													
全断面 A <sub>0</sub> (m <sup>2</sup> )		0.6101		0.7721		0.7575		0.9575		1.1568		1.2568	
通水断面積 A(m <sup>2</sup> )		0.6101		0.7721		0.7575		0.9575		1.1568		1.2568	
潤 辺 P(m)		2.2773		2.5676		2.6591		2.8591		3.0513		3.1513	
径 深 R(m)		0.2679		0.3007		0.2849		0.3349		0.3791		0.3988	
R <sup>2/3</sup>		0.4156		0.4488		0.4330		0.4823		0.5238		0.5418	
I	I <sup>1/2</sup>	V		Q		V		Q		V		Q	
1/ 50	0.14142	4.198	2.5612	4.534	3.5007	4.374	3.3133	4.872	4.6649	5.291	6.1208	5.473	6.8784
75	0.11547	3.428	2.0914	3.702	2.8583	3.571	2.7050	3.978	3.8089	4.320	4.9977	4.469	5.6162
100	0.10000	2.968	1.8108	3.206	2.4754	3.093	2.3429	3.445	3.2986	3.741	4.3281	3.870	4.8638
125	0.08944	2.655	1.6198	2.867	2.2136	2.766	2.0952	3.081	2.9501	3.346	3.8711	3.461	4.3502
150	0.08165	2.424	1.4789	2.617	2.0206	2.525	1.9127	2.813	2.6934	3.055	3.5339	3.160	3.9713
200	0.07071	2.099	1.2806	2.267	1.7504	2.187	1.6567	2.436	2.3325	2.646	3.0604	2.736	3.4392
250	0.06325	1.877	1.1452	2.028	1.5658	1.956	1.4817	2.179	2.0864	2.366	2.7375	2.448	3.0764
300	0.05774	1.714	1.0457	1.851	1.4292	1.786	1.3529	1.989	1.9045	2.160	2.4991	2.235	2.8084
350	0.05345	1.587	0.9682	1.713	1.3226	1.653	1.2521	1.841	1.7628	2.000	2.3134	2.069	2.5997
400	0.05000	1.484	0.9054	1.603	1.2377	1.546	1.1711	1.722	1.6488	1.871	2.1641	1.935	2.4319
450	0.04714	1.399	0.8535	1.511	1.1666	1.458	1.1044	1.624	1.5550	1.764	2.0403	1.824	2.2928
500	0.04472	1.328	0.8102	1.434	1.1072	1.383	1.0476	1.541	1.4755	1.637	1.9355	1.731	2.1751
550	0.04264	1.266	0.7724	1.367	1.0555	1.319	0.9991	1.469	1.4066	1.595	1.8455	1.650	2.0739
600	0.04082	1.212	0.7394	1.309	1.0107	1.263	0.9567	1.406	1.3462	1.527	1.7667	1.580	1.9854
650	0.03922	1.164	0.7102	1.257	0.9705	1.213	0.9188	1.351	1.2936	1.467	1.6975	1.518	1.9076
700	0.03780	1.122	0.6845	1.212	0.9358	1.169	0.8855	1.302	1.2467	1.414	1.6360	1.467	1.8385
750	0.03651	1.084	0.6613	1.170	0.9034	1.129	0.8552	1.258	1.2045	1.366	1.5802	1.413	1.7758
800	0.03536	1.049	0.6400	1.134	0.8756	1.093	0.8279	1.218	1.1662	1.323	1.5304	1.368	1.7198
850	0.03430	1.018	0.6211	1.100	0.8493	1.061	0.8037	1.182	1.1318	1.283	1.4845	1.327	1.6683
900	0.03333	0.989	0.6034	1.068	0.8246	1.031	0.7810	1.148	1.0992	1.247	1.4426	1.290	1.6211
950	0.03244	0.963	0.5875	1.040	0.8030	1.003	0.7598	1.118	1.0705	1.214	1.4040	1.255	1.5778
1000	0.03162	0.939	0.5729	1.014	0.7829	0.978	0.7408	1.089	1.0427	1.183	1.3686	1.224	1.5379
1100	0.03015	0.895	0.5460	0.967	0.7466	0.932	0.7060	1.039	0.9948	1.128	1.3049	1.167	1.4664
1200	0.02887	0.857	0.5229	0.925	0.7142	0.893	0.6764	0.994	0.9518	1.080	1.2495	1.117	1.4042
1250	0.02828	0.840	0.5125	0.907	0.7003	0.875	0.6628	0.974	0.9326	1.058	1.2240	1.094	1.3755
1300	0.02774	0.823	0.5021	0.889	0.6864	0.858	0.6499	0.955	0.9144	1.038	1.2006	1.074	1.3492
1400	0.02673	0.793	0.4838	0.857	0.6617	0.827	0.6265	0.921	0.8819	1.000	1.1569	1.034	1.3001
1500	0.02582	0.766	0.4673	0.828	0.6393	0.799	0.6052	0.889	0.8512	0.966	1.1175	0.999	1.2558
1600	0.02500	0.742	0.4527	0.801	0.6185	0.733	0.5855	0.861	0.8244	0.935	1.0820	0.968	1.2160
1700	0.02425	0.720	0.4393	0.777	0.5999	0.750	0.5681	0.835	0.7995	0.907	1.0496	0.938	1.1795
1750	0.02390	0.710	0.4332	0.766	0.5914	0.739	0.5598	0.823	0.7880	0.894	1.0344	0.925	1.1625
1800	0.02357	0.700	0.4271	0.756	0.5837	0.729	0.5522	0.812	0.7775	0.882	1.0201	0.912	1.1464
1900	0.02294	0.681	0.4155	0.735	0.5675	0.710	0.5378	0.790	0.7564	0.858	0.9929	0.888	1.1158
2000	0.02236	0.664	0.4051	0.717	0.5536	0.692	0.5242	0.770	0.7373	0.837	0.9678	0.865	1.0875
2500	0.02000	0.594	0.3624	0.641	0.4949	0.619	0.4689	0.689	0.6597	0.748	0.8656	0.774	0.9728
3000	0.01826	0.542	0.3307	0.585	0.4517	0.565	0.4280	0.629	0.6023	0.683	0.7903	0.707	0.8881

(注) 上記通水断面、勾配以外の場合は別途計算します。

Q : 流量 (m<sup>3</sup>/s e c), V : 流速 (m/s e c), n = 0.014

※は当社独自の製品です。

1000×1500		1000×1700		1000×1900		1000×2000		※1100×1100		1200×1200		1200×1300	
1.4568		1.6568		1.8568		1.9568		1.1573		1.3768		1.4968	
1.4568		1.6568		1.8568		1.9568		1.1573		1.3768		1.4968	
3.3513		3.5513		3.7513		3.8513		3.1417		3.4320		3.5320	
0.4347		0.4665		0.4950		0.5081		0.3684		0.4012		0.4238	
0.5738		0.6015		0.6258		0.6367		0.5139		0.5440		0.5642	
V	Q	V	Q	V	Q	V	Q	V	Q	V	Q	V	Q
5.796	8.4439	6.076	10.0667	6.321	11.7377	6.432	12.5853	5.191	6.0078	5.495	7.5658	5.699	8.5306
4.733	6.8945	4.961	8.2195	5.162	9.5839	5.251	10.2760	4.238	4.9054	4.487	6.1775	4.653	6.9653
4.099	5.9708	4.296	7.1183	4.470	8.2999	4.548	8.8992	3.671	4.2482	3.886	5.3499	4.030	6.0321
3.666	5.3403	3.843	6.3666	3.998	7.4234	4.068	7.9595	3.283	3.7997	3.475	4.7849	3.604	5.3951
3.346	4.8752	3.508	5.8121	3.650	6.7769	3.713	7.2662	2.997	3.4686	3.173	4.3682	3.290	4.9252
2.898	4.2220	3.038	5.0334	3.161	5.8689	3.216	6.2927	2.596	3.0039	2.748	3.7829	2.850	4.2653
2.592	3.7765	2.717	4.5023	2.827	5.2497	2.877	5.6288	2.322	2.6868	2.458	3.3838	2.549	3.8153
2.367	3.4475	2.481	4.1101	2.581	4.7924	2.626	5.1384	2.119	2.4527	2.244	3.0890	2.327	3.4829
2.191	3.1914	2.296	3.8047	2.389	4.4363	2.431	4.7566	1.962	2.2707	2.077	2.8595	2.154	3.2242
2.049	2.9854	2.148	3.5592	2.235	4.1499	2.274	4.4496	1.835	2.1241	1.943	2.6749	2.015	3.0161
1.932	2.8146	2.025	3.3556	2.107	3.9126	2.144	4.1951	1.730	2.0026	1.832	2.5219	1.900	2.8432
1.833	2.6700	1.921	3.1833	1.999	3.7117	2.034	3.9797	1.642	1.8998	1.738	2.3925	1.802	2.6976
1.748	2.5459	1.832	3.0353	1.906	3.5391	1.939	3.7946	1.565	1.8114	1.657	2.2812	1.718	2.5721
1.673	2.4373	1.754	2.9057	1.825	3.3880	1.856	3.6327	1.499	1.7343	1.586	2.1838	1.645	2.4623
1.607	2.3417	1.685	2.7918	1.753	3.2552	1.784	3.4903	1.440	1.6663	1.524	2.0982	1.581	2.3658
1.549	2.2570	1.624	2.6907	1.690	3.1374	1.719	3.3639	1.387	1.6057	1.469	2.0222	1.523	2.2801
1.496	2.1799	1.569	2.5989	1.632	3.0303	1.660	3.2491	1.340	1.5512	1.419	1.9532	1.471	2.2023
1.449	2.1113	1.519	2.5170	1.581	2.9348	1.608	3.1468	1.298	1.5020	1.374	1.8917	1.425	2.1330
1.406	2.0480	1.474	2.4416	1.533	2.8469	1.560	3.0524	1.259	1.4571	1.333	1.8350	1.382	2.0690
1.366	1.9901	1.432	2.3725	1.490	2.7664	1.516	2.9661	1.224	1.4161	1.295	1.7831	1.343	2.0105
1.330	1.9369	1.394	2.3092	1.450	2.6925	1.475	2.8869	1.191	1.3783	1.261	1.7355	1.307	1.9568
1.296	1.8880	1.359	2.2508	1.413	2.6244	1.438	2.8139	1.161	1.3434	1.229	1.6916	1.274	1.9074
1.236	1.8002	1.295	2.1462	1.348	2.5024	1.371	2.6831	1.107	1.2809	1.172	1.6130	1.215	1.8187
1.183	1.7238	1.240	2.0551	1.290	2.3962	1.313	2.5692	1.060	1.2263	1.122	1.5445	1.163	1.7415
1.159	1.6885	1.215	2.0131	1.264	2.3472	1.286	2.5167	1.038	1.2016	1.099	1.5129	1.140	1.7059
1.137	1.6563	1.192	1.9746	1.240	2.3024	1.262	2.4687	1.018	1.1782	1.078	1.4840	1.118	1.6733
1.096	1.5960	1.148	1.9027	1.195	2.2186	1.216	2.3788	0.981	1.1354	1.039	1.4300	1.077	1.6124
1.058	1.5417	1.109	1.8380	1.154	2.1430	1.174	2.2978	0.948	1.0969	1.003	1.3813	1.041	1.5575
1.025	1.4927	1.074	1.7796	1.118	2.0750	1.137	2.2248	0.918	1.0620	0.971	1.3375	1.008	1.5080
0.994	1.4479	1.042	1.7262	1.084	2.0127	1.103	2.1581	0.890	1.0303	0.942	1.2973	0.977	1.4628
0.980	1.4270	1.027	1.7013	1.068	1.9837	1.087	2.1269	0.877	1.0155	0.929	1.2786	0.963	1.4417
0.966	1.4073	1.013	1.6778	1.054	1.9563	1.072	2.0976	0.865	1.0013	0.916	1.2610	0.950	1.4218
0.940	1.3697	0.986	1.6329	1.025	1.9040	1.043	2.0415	0.842	0.9746	0.891	1.2273	0.924	1.3838
0.916	1.3351	0.961	1.5917	0.999	1.8559	1.017	1.9899	0.821	0.9499	0.869	1.1962	0.901	1.3488
0.820	1.1942	0.859	1.4237	0.894	1.6600	0.910	1.7798	0.734	0.8496	0.777	1.0700	0.806	1.2064
0.748	1.0903	0.785	1.2998	0.816	1.5156	0.830	1.6250	0.670	0.7756	0.710	0.9769	0.736	1.1015

Q : 流量 (m<sup>3</sup>/sec), V : 流速 (m/sec), n = 0.014

※は当社独自の製品です。

呼 び 名	1200×1500	1200×1700	1200×1900	1200×2000	1200×2200	1300×1300	1300×2300								
通水断面図 (単位mm)															
全断面 A <sub>0</sub> (m <sup>2</sup> )	1.7368	1.9768	2.2168	2.3368	2.5768	1.6142	2.9142								
通水断面積 A(m <sup>2</sup> )	1.7368	1.9768	2.2168	2.3368	2.5768	1.6142	2.9142								
潤 辺 P(m)	3.7320	3.9320	4.1320	4.2320	4.4320	3.7065	4.7065								
径 深 R(m)	0.4654	0.5028	0.5365	0.5522	0.5814	0.4355	0.6192								
R <sup>2/3</sup>	0.6006	0.6323	0.6603	0.6731	0.6966	0.5745	0.7265								
I	I <sup>1/2</sup>	V	Q	V	Q	V	Q	V	Q	V	Q	V	Q	V	Q
1/ 50	0.14142	6.067	10.5370	6.387	12.6261	6.670	14.7860	6.799	15.8885	7.037	18.1321	5.804	9.3687	7.338	21.3857
75	0.11547	4.954	8.6035	5.215	10.3092	5.446	12.0728	5.552	12.9731	5.745	14.8049	4.739	7.6495	5.992	17.4613
100	0.10000	4.290	7.4509	4.516	8.9281	4.716	10.4554	4.808	11.2350	4.976	12.8214	4.104	6.6246	5.189	15.1220
125	0.08944	3.837	6.6641	4.039	7.9853	4.218	9.3513	4.300	10.0486	4.450	11.4675	3.671	5.9253	4.641	13.5255
150	0.08165	3.503	6.0836	3.688	7.2898	3.851	8.5368	3.926	9.1734	4.063	10.4687	3.351	5.4090	4.237	12.3470
200	0.07071	3.033	5.2685	3.194	6.3138	3.335	7.3930	3.400	7.9443	3.518	9.0660	2.902	4.6843	3.669	10.6928
250	0.06325	2.713	4.7127	2.857	5.6470	2.983	6.6130	3.041	7.1061	3.147	8.1095	2.596	4.1898	3.282	9.5640
300	0.05774	2.477	4.3021	2.608	5.1551	2.723	6.0369	2.776	6.4871	2.873	7.4031	2.369	3.8247	2.996	8.7307
350	0.05345	2.293	3.9825	2.414	4.7721	2.521	5.5884	2.570	6.0051	2.660	6.8530	2.194	3.5410	2.774	8.0830
400	0.05000	2.145	3.7254	2.258	4.4640	2.358	5.2277	2.404	5.6175	2.488	6.4107	2.052	3.3123	2.595	7.5610
450	0.04714	2.022	3.5123	2.129	4.2087	2.223	4.9287	2.266	5.2962	2.346	6.0440	1.935	3.1229	2.446	7.1286
500	0.04472	1.918	3.3320	2.020	3.9926	2.109	4.6756	2.150	5.0243	2.225	5.7337	1.835	2.9626	2.321	6.7627
550	0.04264	1.829	3.1771	1.926	3.8069	2.011	4.4582	2.050	4.7906	2.122	5.4671	1.750	2.8248	2.213	6.4480
600	0.04082	1.751	3.0414	1.844	3.6444	1.925	4.2679	1.963	4.5861	2.031	5.2337	1.675	2.7045	2.118	6.1735
650	0.03922	1.683	2.9222	1.771	3.5016	1.850	4.1006	1.886	4.4064	1.951	5.0286	1.610	2.5984	2.035	5.9313
700	0.03780	1.622	2.8164	1.707	3.3748	1.783	3.9521	1.817	4.2468	1.881	4.8465	1.551	2.5039	1.961	5.7156
750	0.03651	1.566	2.7203	1.649	3.2596	1.722	3.8173	1.755	4.1019	1.817	4.6811	1.499	2.4190	1.895	5.5218
800	0.03536	1.517	2.6346	1.597	3.1570	1.668	3.6970	1.700	3.9727	1.759	4.5337	1.451	2.3422	1.835	5.3464
850	0.03430	1.471	2.5548	1.549	3.0623	1.618	3.5862	1.649	3.8536	1.707	4.3977	1.408	2.2722	1.780	5.1868
900	0.03333	1.430	2.4834	1.505	2.9757	1.572	3.4848	1.602	3.7446	1.658	4.2734	1.368	2.2082	1.730	5.0407
950	0.03244	1.392	2.4171	1.465	2.8963	1.530	3.3917	1.560	3.6446	1.614	4.1593	1.331	2.1493	1.684	4.9062
1000	0.03162	1.356	2.3560	1.428	2.8231	1.491	3.3060	1.520	3.5525	1.573	4.0541	1.298	2.0949	1.641	4.7820
1100	0.03015	1.293	2.2464	1.362	2.6918	1.422	3.1523	1.450	3.3874	1.500	3.8657	1.237	1.9974	1.565	4.5594
1200	0.02887	1.239	2.1511	1.304	2.5775	1.362	3.0185	1.388	3.2435	1.436	3.7015	1.185	1.9124	1.498	4.3653
1250	0.02828	1.213	2.1071	1.277	2.5249	1.334	2.9568	1.360	3.1774	1.407	3.6259	1.161	1.8737	1.468	4.2771
1300	0.02774	1.190	2.0669	1.253	2.4766	1.308	2.9003	1.334	3.1166	1.380	3.5569	1.138	1.8373	1.439	4.1941
1400	0.02673	1.147	1.9916	1.207	2.3865	1.261	2.7947	1.285	3.0031	1.330	3.4272	1.097	1.7705	1.387	4.0415
1500	0.02582	1.108	1.9238	1.166	2.3052	1.218	2.6996	1.241	2.9009	1.285	3.3105	1.060	1.7105	1.340	3.9045
1600	0.02500	1.073	1.8627	1.129	2.2320	1.179	2.6138	1.202	2.8088	1.244	3.2054	1.026	1.6562	1.297	3.7805
1700	0.02425	1.040	1.8068	1.095	2.1651	1.144	2.5354	1.166	2.7245	1.207	3.1092	0.995	1.6067	1.259	3.6676
1750	0.02390	1.025	1.7808	1.079	2.1338	1.127	2.4988	1.149	2.6852	1.189	3.0643	0.981	1.5836	1.240	3.6148
1800	0.02357	1.011	1.7562	1.065	2.1043	1.112	2.4643	1.133	2.6481	1.173	3.0220	0.967	1.5614	1.223	3.5643
1900	0.02294	0.984	1.7092	1.036	2.0481	1.082	2.3985	1.103	2.5773	1.141	2.9412	0.942	1.5198	1.190	3.4692
2000	0.02236	0.959	1.6660	1.010	1.9963	1.055	2.3378	1.075	2.5121	1.113	2.8669	0.918	1.4813	1.160	3.3814
2500	0.02000	0.858	1.4902	0.903	1.7856	0.943	2.0911	0.962	2.2470	0.995	2.5643	0.821	1.3249	1.038	3.0244
3000	0.01826	0.783	1.3605	0.825	1.6303	0.861	1.9092	0.878	2.0515	0.909	2.3412	0.749	1.2095	0.947	2.7609

(注) 上記通水断面、勾配以外の場合は別途計算します。

Q : 流量 (m<sup>3</sup>/s e c), V : 流速 (m/s e c), n = 0.014

※は当社独自の製品です。

1400×1500		1400×1800		1400×2000		1400×2200		1400×2400		1500×1500		1500×1800	
2.0191		2.4391		2.7191		2.9991		3.2791		2.1561		2.6061	
2.0191		2.4391		2.7191		2.9991		3.2791		2.1561		2.6061	
4.1139		4.4139		4.6139		4.8139		5.0139		4.3042		4.6042	
0.4908		0.5526		0.5893		0.6230		0.6540		0.5009		0.5660	
0.6222		0.6734		0.7029		0.7294		0.7534		0.6307		0.6842	
V	Q	V	Q	V	Q	V	Q	V	Q	V	Q	V	Q
6.285	12.6903	6.802	16.5915	7.100	19.3064	7.368	22.0973	7.610	24.9553	6.371	13.7365	6.912	18.0129
5.132	10.3617	5.554	13.5470	5.797	15.7638	6.016	18.0425	6.214	20.3761	5.202	11.2159	5.644	14.7076
4.444	8.9735	4.810	11.7321	5.021	13.6518	5.210	15.6253	5.381	17.6462	4.505	9.7132	4.887	12.7372
3.975	8.0259	4.302	10.4932	4.491	12.2102	4.660	13.9753	4.813	15.7828	4.029	8.6875	4.371	11.3922
3.629	7.3268	3.927	9.5792	4.099	11.1467	4.254	12.7581	4.394	14.4082	3.678	7.9309	3.991	10.3999
3.143	6.3451	3.401	8.2957	3.550	9.6532	3.684	11.0487	3.805	12.4777	3.185	6.8682	3.456	9.0065
2.811	5.6757	3.042	7.4205	3.176	8.6348	3.295	9.8830	3.404	11.1612	2.849	6.1436	3.091	8.0563
2.566	5.1813	2.777	6.7741	2.899	7.8826	3.008	9.0221	3.107	10.1889	2.601	5.6084	2.822	7.3545
2.375	4.7963	2.571	6.2708	2.684	7.2969	2.785	8.3517	2.876	9.4319	2.408	5.1917	2.612	6.8080
2.222	4.4867	2.405	5.8660	2.510	6.8259	2.605	7.8127	2.691	8.8231	2.253	4.8566	2.444	6.3686
2.095	4.2301	2.267	5.5305	2.367	6.4355	2.456	7.3658	2.537	8.3184	2.124	4.5788	2.304	6.0043
1.987	4.0129	2.151	5.2466	2.245	6.1051	2.330	6.9876	2.407	7.8914	2.015	4.3438	2.186	5.6961
1.895	3.8263	2.051	5.0026	2.141	5.8211	2.222	6.6626	2.295	7.5244	1.921	4.1417	2.084	5.4311
1.814	3.6630	1.963	4.7890	2.049	5.5727	2.127	6.3783	2.197	7.2032	1.839	3.9649	1.995	5.1993
1.743	3.5194	1.886	4.6013	1.969	5.3542	2.043	6.1282	2.111	6.9209	1.767	3.8095	1.917	4.9955
1.680	3.3920	1.818	4.4347	1.898	5.1604	1.969	5.9064	2.034	6.6703	1.703	3.6716	1.847	4.8147
1.623	3.2762	1.756	4.2834	1.833	4.9843	1.902	5.7048	1.965	6.4426	1.645	3.5463	1.784	4.6504
1.571	3.1730	1.701	4.1485	1.775	4.8273	1.842	5.5251	1.903	6.2397	1.593	3.4346	1.728	4.5039
1.524	3.0779	1.650	4.0241	1.722	4.6826	1.787	5.3595	1.846	6.0527	1.545	3.3316	1.676	4.3689
1.481	2.9909	1.603	3.9103	1.673	4.5502	1.736	5.2079	1.794	5.8815	1.502	3.2374	1.629	4.2453
1.442	2.9110	1.560	3.8059	1.629	4.4287	1.690	5.0689	1.746	5.7244	1.461	3.1510	1.585	4.1319
1.405	2.8374	1.521	3.7097	1.588	4.3167	1.647	4.9407	1.702	5.5797	1.424	3.0713	1.545	4.0275
1.340	2.7055	1.450	3.5372	1.514	4.1160	1.571	4.7110	1.623	5.3203	1.358	2.9285	1.474	3.8403
1.283	2.5906	1.389	3.3870	1.449	3.9413	1.504	4.5110	1.554	5.0945	1.301	2.8042	1.411	3.6772
1.257	2.5377	1.360	3.3178	1.420	3.8607	1.473	4.4188	1.522	4.9904	1.274	2.7469	1.382	3.6021
1.233	2.4892	1.334	3.2545	1.393	3.7870	1.445	4.3345	1.493	4.8951	1.250	2.6945	1.356	3.5333
1.188	2.3986	1.286	3.1360	1.342	3.6491	1.393	4.1766	1.483	4.7168	1.204	2.5963	1.306	3.4047
1.148	2.3169	1.242	3.0292	1.296	3.5249	1.345	4.0345	1.389	4.5563	1.163	2.5080	1.262	3.2887
1.111	2.2434	1.203	2.9330	1.255	3.4130	1.303	3.9063	1.345	4.4116	1.126	2.4283	1.222	3.1843
1.078	2.1761	1.166	2.8450	1.218	3.3106	1.263	3.7891	1.305	4.2792	1.092	2.3555	1.185	3.0888
1.062	2.1447	1.150	2.8040	1.200	3.2628	1.245	3.7344	1.286	4.2175	1.077	2.3215	1.168	3.0442
1.048	2.1150	1.134	2.7652	1.183	3.2177	1.228	3.6829	1.268	4.1594	1.062	2.2894	1.152	3.0022
1.020	2.0585	1.103	2.6913	1.152	3.1317	1.195	3.5844	1.234	4.0480	1.033	2.2282	1.121	2.9219
0.994	2.0065	1.076	2.6233	1.123	3.0525	1.165	3.4938	1.203	3.9457	1.007	2.1719	1.093	2.8480
0.889	1.7947	0.962	2.3464	1.004	2.7304	1.042	3.1251	1.076	3.5292	0.901	1.9426	0.977	2.5474
0.812	1.6386	0.878	2.1423	0.917	2.4928	0.951	2.8532	0.983	3.2222	0.823	1.7736	0.892	2.3258